

# Ratio of Students per Household

# 3

While the common assumption is that every home contains an average of two students, in reality this ratio of students per home is actually much lower. Most suburban Districts average about 0.5 to 0.75 students per home overall, but more importantly, some specific neighborhoods have much higher and much lower ratios. It is important for PASA to understand which neighborhoods are more student-oriented and which neighborhoods house more empty-nest families so that comparable ratios can be applied to the projected new housing.

## Ratios of Students per Household – Single Family

The first map and chart in this chapter show ratios of students for single-family units within major subdivisions. These ratios were calculated by counting the number of students living in each subdivision and comparing that to the number of homes.

The ratios of students per home ranged from **0.00 to 2.17** in specific subdivisions, and the weighted average throughout the District was **0.62** students per single-family home.

The ***highest ratios*** of students per occupied home were found in the following subdivisions:

Planning Unit	Development	Ratio
1A	<i>Willow Estates</i>	<b>2.17</b>
53,54A	<i>Capistrano Villas</i>	<b>1.44</b>
59	<i>Northwest Green</i>	<b>1.26</b>
6D	<i>Pinewood Place MHP</i>	<b>1.25</b>
52B	<i>Timber Meadow</i>	<b>1.22</b>
7A	<i>Preserve at Northampton</i>	<b>1.17</b>
5C	<i>The Manor</i>	<b>1.16</b>
8A	<i>Oakwood Village</i>	<b>1.15</b>
52A	<i>Northcliffe</i>	<b>1.14</b>
65	<i>Cherie Cove</i>	<b>1.14</b>
3A	<i>Stratford at Willow Creek</i>	<b>1.10</b>
5C	<i>Hillcrest</i>	<b>1.10</b>
61,62A	<i>Willowood</i>	<b>1.04</b>
54B	<i>Champions Point Grove</i>	<b>1.03</b>
55C	<i>Hamill Ranch</i>	<b>1.02</b>

The ***lowest ratios*** were found in the following subdivisions:

<b>Planning Unit</b>	<b>Development</b>	<b>Ratio</b>
<b>1B</b>	<i>Auburn Lakes Retreat Sec 4</i>	<b>0.00</b>
<b>15H</b>	<i>Auburn Lakes</i>	<b>0.00</b>
<b>49</b>	<i>Greenwood Forest TH</i>	<b>0.00</b>
<b>54B</b>	<i>Hamill Crossing</i>	<b>0.00</b>
<b>48</b>	<i>Huntwick Parc</i>	<b>0.00</b>
<b>56A</b>	<i>Klein Arbor</i>	<b>0.00</b>
<b>46</b>	<i>Marble Gate Court</i>	<b>0.00</b>
<b>12B</b>	<i>The Sanctaury</i>	<b>0.00</b>
<b>1A</b>	<i>The Villas</i>	<b>0.00</b>
<b>21C</b>	<i>Vintage Di Vita Townhomes</i>	<b>0.00</b>
<b>2</b>	<i>Wimbledon Falls Sec 6</i>	<b>0.00</b>

Such data are helpful in understanding why students are more dense in specific locations and which neighborhoods are empty-nest areas. They also point to neighborhoods that are disproportionately oriented to older students or to young students. The ratios help to estimate the grade-groups that will live in these neighborhoods over time, and, most importantly, assist in establishing the potential ratio of students per grade-group for comparable new subdivisions and new apartment complexes.

Although these ratios are utilized to obtain projections of added students for all new subdivisions and Planning Units, it is necessary to continue evaluating long-term trends in the ratios, as they will change as a subdivision or apartment complex ages.

## Ratios of Students per Household – Multi-Family

In multi-family apartment complexes, the ratios of students per unit ranged from **0.08** to **0.85** in specific complexes, and the weighted average throughout the District was **0.37** students per apartment unit. Woodglen Village (.80), Oak Fallas (.81), Villages of Inwood (.81) and Briar Park (.85) were the only complexes over .8 students per unit. Waterman Crossing Condos has .08 students per unit, and was the only one below .10 students per unit.

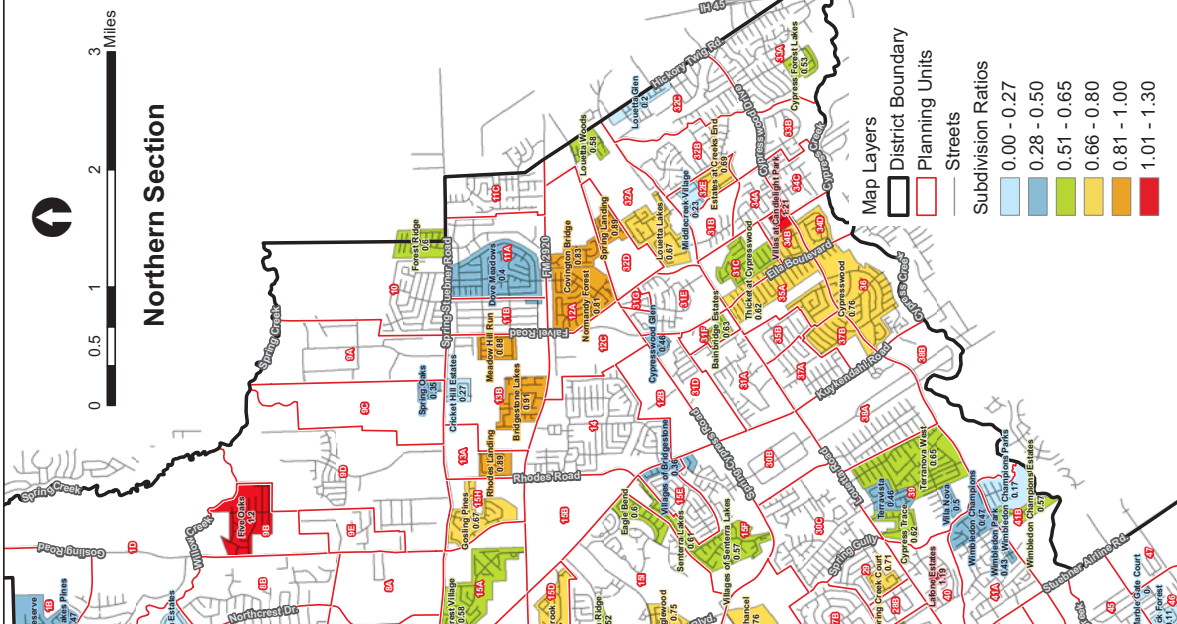
Approximately 7,457 units of the 8,173 within the District are occupied (an overall 91% occupancy rate), with 2,748 students residing in those apartments.

## Historical Trends in Ratios

Some suburban districts, as they mature and build-out, begin to decline in students and, thus, may have a public school student in less than half of their households. Klein's ratios have, on the average, declined slightly, with the highest in 2003 at 0.71 (prior to the big increase in homes with younger families moving in) – and down to 0.59 in 2007. Since 2007, these ratios, on the average, have remained around 0.65. For this Fall's study, the ratios average 0.62, with the slight decline due to a number of empty-nest oriented new sections of master-planned communities and also due to a decline in students in older subdivisions.

One of the important factors that contributed to the model for projecting student population involves increasing ratios in specific areas of the District. At the same time, the projections model allows these ratios to decline in other subdivisions and apartments – based on evidence from student trends, which PASA analyzes for each subdivision and apartment and mobile home community.

# Ratios of Students per Occupied Unit By Subdivision



**Map Layers**

- District Boundary
- Planning Units
- Streets

**Subdivision Ratios**

- 0.00 - 0.27
- 0.28 - 0.50
- 0.51 - 0.65
- 0.66 - 0.80
- 0.81 - 1.00
- 1.01 - 1.30

Klein ISD:

Ratio of Students per Single Family Home by Subdivision



Planning Unit	Subdivision	Total Ratio	# of Students	# of Homes	PK-5th		6th-8th		9th-12th	
					Ratio	Students	Ratio	Students	Ratio	Students
3D	Albury Manor	0.17	8	46	0.07	3	0.04	2	0.07	3
3C	Albury Trail Estates	0.27	14	51	0.22	11	0.02	1	0.04	2
15I	Arbors	0.67	134	201	0.27	55	0.17	35	0.22	44
5C	Arbors	0.02	1	52	0.02	1	0.00	0	0.00	0
58	Ash Creek	0.85	282	330	0.37	122	0.21	70	0.27	90
5I	Ashford Grove	0.45	34	76	0.17	13	0.07	5	0.05	4
5I	Ashford Place	0.54	135	249	0.29	71	0.12	31	0.13	33
1D	Auburn Lakes Estates	0.54	21	39	0.15	6	0.18	7	0.21	8
1B	Auburn Lakes Pines	0.52	98	188	0.35	65	0.10	18	0.08	15
1B	Auburn Lakes Reserve	0.51	91	180	0.30	54	0.10	18	0.11	19
1B	Auburn Lakes Retreat	0.70	103	147	0.42	62	0.09	13	0.19	28
1B	Auburn Lakes Retreat Sec 4	0.00	0	1	0.00	0	0.00	0	0.00	0
15I	Auburn Ridge	0.52	13	25	0.12	3	0.24	6	0.16	4
1A	Augusta Creek Estates	0.47	7	15	0.13	2	0.13	2	0.20	3
1A	Augusta Creek Pointe	0.52	16	31	0.29	9	0.13	4	0.10	3
1A	Augusta Pines	0.47	24	51	0.24	12	0.08	4	0.16	8
5H	Azalea Estates	0.42	16	38	0.24	9	0.08	3	0.11	4
67B	Azalea Village	0.84	21	25	0.60	15	0.08	2	0.16	4
31F	Bainbridge Estates	0.75	44	59	0.32	19	0.03	2	0.39	23
55D	Bammel Oaks Estates	0.58	53	91	0.29	26	0.11	10	0.19	17
6C	Bella Serra	0.69	118	171	0.40	69	0.12	20	0.17	29
32C	Bending Bough	0.39	30	76	0.17	13	0.16	12	0.07	5
47	Big Cypress Hill Estates	0.19	3	16	0.19	3	0.00	0	0.00	0
60	Blue Creek	0.95	546	573	0.48	275	0.23	129	0.25	142
5B	Boudreaux Garden MHP	0.71	36	51	0.00	20	0.00	10	0.00	6
45	Brandonwood	0.12	13	112	0.06	7	0.04	4	0.02	2
31D	Brandywine Pines	0.97	88	91	0.41	37	0.21	19	0.35	32
19A	Brentwood Lakes	0.39	23	59	0.17	10	0.05	3	0.17	10

Klein ISD:



Ratio of Students per Single Family Home by Subdivision

Planning Unit	Subdivision	Total Ratio	# of Students	# of Homes	PK-5th		6th-8th		9th-12th	
					Ratio	Students	Ratio	Students	Ratio	Students
14	Bridgestone	0.61	988	1615	0.29	465	0.15	239	0.18	284
13B	Bridgestone Lakes	0.82	255	310	0.38	117	0.17	54	0.27	84
14	Bridgestone Ranch	0.64	45	70	0.00	23	0.00	10	0.00	12
15E	Bridgestone West	0.54	271	498	0.26	130	0.10	50	0.18	91
34A,31B,34C	Candlelight Hills	0.45	209	465	0.18	82	0.10	46	0.17	81
34A, 34C	Candlelight Park Estates	0.22	54	245	0.08	19	0.06	15	0.08	20
53,54A	Capistrano Villas	1.44	46	32	0.75	24	0.38	12	0.31	10
21A	Cedar Creek Forest MHP	0.13	11	83	0.08	7	0.02	2	0.02	2
5H	Cedar Oaks	0.92	57	62	0.52	32	0.18	11	0.23	14
22, 44A	Champion Forest	0.44	654	1492	0.17	253	0.11	160	0.16	241
4B	Champion Lake Estates	0.45	17	38	0.18	7	0.11	4	0.16	6
55A	Champion Point Village	0.95	414	435	0.38	166	0.25	107	0.32	141
23B	Champion Springs	0.60	156	260	0.23	59	0.12	32	0.25	65
23B	Champion Springs Village	0.45	34	76	0.17	13	0.16	12	0.12	9
4B	Champion Woods	0.50	4	8	0.38	3	0.00	0	0.13	1
25	Champion Woods Estates	0.52	52	100	0.16	16	0.14	14	0.22	22
55B	Champions Crossing	0.47	177	380	0.24	90	0.10	39	0.13	48
54B	Champions Point Grove	1.03	82	80	0.56	45	0.25	20	0.21	17
47	Champions Terrace	0.24	59	247	0.11	28	0.07	17	0.06	14
23C	Champions Trail	0.27	20	75	0.16	12	0.05	4	0.05	4
55A	Champions Valley TH	0.97	35	36	0.61	22	0.19	7	0.17	6
20B,21B	Charterwood	0.68	634	932	0.36	332	0.15	139	0.17	163
65	Cherie Cove	1.14	64	56	0.43	24	0.27	15	0.45	25
23B	Colony Creek Village	0.56	625	1125	0.24	270	0.12	136	0.19	219
57B	Copper Falls	0.95	118	124	0.40	50	0.22	27	0.33	41
5A	Cottage Gardens	0.66	355	535	0.38	204	0.16	85	0.12	66
3C	Country Club Greens	0.84	86	102	0.38	39	0.21	21	0.25	26
31A	Country Lake Estates	0.76	348	455	0.42	191	0.15	66	0.20	91



**Klein ISD:  
Ratio of Students per Single Family Home by Subdivision**

Planning Unit	Subdivision	Total Ratio	# of Students	# of Homes	PK-5th		6th-8th		9th-12th	
					Ratio	Students	Ratio	Students	Ratio	Students
1D	Courts	0.09	5	53	0.06	3	0.00	0	0.04	2
1A	Coventry	0.55	175	321	0.22	72	0.15	47	0.17	56
12A	Coventry Bridge	0.81	169	208	0.33	69	0.22	45	0.26	55
6B	Creekside Place	0.78	149	191	0.37	71	0.19	37	0.21	41
1C	Creekwood Acres	0.32	25	77	0.13	10	0.06	5	0.13	10
13B	Cricket Hill Estates MHP	0.48	19	40	0.23	9	0.15	6	0.10	4
55A	Cuttan Green	0.38	242	629	0.16	103	0.09	55	0.13	84
45	Cypress Creek Manor	0.32	18	56	0.18	10	0.04	2	0.11	6
33A	Cypress Forest Estates	0.40	63	159	0.12	19	0.11	18	0.16	26
33A	Cypress Forest Lakes	0.65	52	80	0.35	28	0.15	12	0.15	12
39	Cypress Trace	0.79	63	80	0.43	34	0.10	8	0.26	21
38A	Cypress Villas	0.77	90	117	0.34	40	0.26	30	0.17	20
35B, 37A	Cypressdale	0.52	402	776	0.23	178	0.14	110	0.15	114
<sup>31C, 34B, 34D, 35A, 36, 37B</sup>	Cypresswood	0.54	921	1710	0.22	383	0.12	205	0.19	333
43A	Cypresswood Forest	0.67	22	33	0.39	13	0.12	4	0.15	5
31E	Cypresswood Glen	0.58	158	272	0.00	57	0.00	45	0.00	56
31E	Cypresswood Glen Estates	0.59	82	139	0.21	29	0.15	21	0.23	32
36	Cypresswood Place	0.09	4	47	0.00	1	0.00	1	0.00	2
32B	Devonshire Woods	0.55	125	229	0.17	40	0.17	38	0.21	47
5F	Dove Manor	0.84	225	267	0.49	130	0.20	53	0.16	42
11A	Dove Meadows	0.55	413	757	0.23	175	0.14	106	0.17	132
52A	Duplexes	0.96	25	26	0.69	18	0.08	2	0.19	5
15I	Eagle Bend	0.57	86	152	0.25	38	0.16	25	0.15	23
15I	Eaglewood	0.77	120	155	0.26	41	0.23	35	0.28	44
47	Edinburg Estates	0.25	21	83	0.16	13	0.06	5	0.04	3
<sup>32B, 32C, 33A</sup>	Enchanted Oaks	0.46	450	975	0.19	189	0.11	111	0.15	150
32E	Estates at Creeks End	0.73	73	100	0.34	34	0.16	16	0.23	23
3C	Estates at Willow Creek	0.28	28	100	0.20	20	0.05	5	0.03	3



**Klein ISD:  
Ratio of Students per Single Family Home by Subdivision**

Planning Unit	Subdivision	Total Ratio	# of Students	# of Homes	PK-5th		6th-8th		9th-12th	
					Ratio	Students	Ratio	Students	Ratio	Students
22	Estates of Windbrush	0.54	66	122	0.18	22	0.13	16	0.23	28
43B	Falls at Champion Forest	0.46	59	128	0.17	22	0.15	19	0.14	18
30B	Farmette Meadows	0.71	40	56	0.25	14	0.21	12	0.25	14
26	Fawn River Garden Homes	0.53	8	15	0.13	2	0.13	2	0.27	4
9B	Five Oaks MHP	0.99	290	292	0.55	161	0.24	69	0.21	60
10	Forest North	0.58	440	755	0.29	220	0.12	88	0.17	132
10	Forest Ridge	0.54	101	186	0.30	55	0.12	22	0.13	24
51,53	Fountainhead	0.64	335	527	0.29	152	0.16	82	0.19	101
9D	Fox Hollow	0.50	56	112	0.23	26	0.11	12	0.16	18
9D	Fox Hollow South	0.66	216	327	0.35	116	0.15	48	0.16	52
15H	Future Auburn Lakes	0.00	0	0	0.00	0	0.00	0	0.00	0
64	Garden City Park	0.40	125	310	0.22	67	0.10	32	0.08	26
5F	Gleannfield	0.59	235	400	0.35	140	0.12	46	0.12	49
5F	Glennmahor	0.54	170	313	0.33	102	0.12	36	0.10	32
19B, 23A	Glenloch	0.45	208	458	0.20	93	0.09	43	0.16	72
18A	Glenn Haven Estates	0.77	140	181	0.30	55	0.18	33	0.29	52
1D	Goodwin Trailer Park MHP	0.09	2	23	0.04	1	0.00	0	0.04	1
15H	Gosling Pines	0.58	181	312	0.29	92	0.17	54	0.11	35
11A	Greengate Acres	0.42	45	107	0.20	21	0.08	9	0.14	15
15I	Greens	0.65	11	17	0.24	4	0.24	4	0.18	3
1D	Greens of Northampton Estates	0.34	48	140	0.11	15	0.06	9	0.17	24
49,50,51,53,54A,54B	Greenwood Forest	0.36	577	1594	0.00	245	0.00	136	0.00	196
49	Greenwood Forest TH	0.00	0	26	0.00	0	0.00	0	0.00	0
54B	Hamill Crossing	0.00	0	0	0.00	0	0.00	0	0.00	0
55C	Hamill Ranch	1.02	43	42	0.50	21	0.36	15	0.17	7
26	Hampton Oaks	0.48	27	56	0.27	15	0.09	5	0.13	7
11C	Hannover Village	0.58	341	587	0.31	183	0.12	73	0.14	85
1A	Haven Lake Estates	0.39	12	31	0.10	3	0.10	3	0.19	6





**Klein ISD:  
Ratio of Students per Single Family Home by Subdivision**

Planning Unit	Subdivision	Total Ratio	# of Students	# of Homes	PK-5th		6th-8th		9th-12th	
					Ratio	Students	Ratio	Students	Ratio	Students
5F	Havenwood	0.27	13	48	0.19	9	0.04	2	0.04	2
5C	Highlands	0.05	5	110	0.01	1	0.02	2	0.02	2
5C	Hillcrest	1.10	310	283	0.53	150	0.32	90	0.25	70
4D	Hollow Glen	0.47	30	64	0.25	16	0.09	6	0.13	8
5H	Homestead Oaks	0.76	26	34	0.44	15	0.29	10	0.03	1
46,48	Huntwick Forest	0.03	6	172	0.03	5	0.00	0	0.01	1
48	Huntwick Parc	0.00	0	41	0.00	0	0.00	0	0.00	0
9E	Hydies Crossing MHP	0.75	44	59	0.41	24	0.14	8	0.20	12
5E	Iverness	0.64	209	328	0.33	107	0.17	55	0.14	47
8B	Inway of Northampton	0.90	9	10	0.00	0	0.40	4	0.50	5
67A	Inwood Court	0.37	11	30	0.20	6	0.07	2	0.10	3
65, 66, 67A	Inwood North	0.64	1142	1778	0.28	503	0.15	265	0.21	374
67B	Inwood Northwest	0.82	289	351	0.40	141	0.18	62	0.25	86
68	Inwood West	0.83	385	466	0.42	198	0.17	81	0.23	106
56A	Klein Arbor	0.00	0	0	0.00	0	0.00	0	0.00	0
2	Klein Meadows	0.76	101	133	0.41	54	0.13	17	0.23	30
56A	Kleinbrook	0.90	436	486	0.43	207	0.19	90	0.29	139
57A	Kleinbrook	0.76	240	315	0.39	123	0.18	58	0.19	59
43A	Kleinwood	0.47	211	451	0.16	72	0.11	51	0.20	88
40	Lafone Estates	0.50	8	16	0.25	4	0.13	2	0.13	2
5C	Lake Estates	0.94	130	138	0.39	54	0.22	31	0.33	45
6C	Lakes at Avalon Village	0.84	117	139	0.40	55	0.16	22	0.29	40
5H	Lakes at Gleannloch	0.85	47	55	0.47	26	0.25	14	0.13	7
33B	Lakes of Cypress Forest	0.44	79	181	0.25	45	0.09	16	0.10	18
22	Lakes of Sterling Gate	0.29	15	52	0.06	3	0.10	5	0.13	7
15I	Links	0.33	9	27	0.07	2	0.15	4	0.11	3
1A	Londonderry	0.63	281	448	0.28	124	0.15	69	0.20	88
32C	Louetta Glen	0.57	96	167	0.21	35	0.17	28	0.20	33



**Klein ISD:  
Ratio of Students per Single Family Home by Subdivision**

Planning Unit	Subdivision	Total Ratio	# of Students	# of Homes	PK-5th		6th-8th		9th-12th	
					Ratio	Students	Ratio	Students	Ratio	Students
32A	Louetta Lakes	0.57	230	402	0.23	94	0.12	50	0.21	86
32A	Louetta Woods	0.46	60	130	0.22	28	0.10	13	0.15	19
16	Lyndhurst	0.52	34	65	0.22	14	0.03	2	0.28	18
20B	Majestic Oaks	0.60	91	152	0.21	32	0.18	28	0.20	31
5C	Manor Estates	0.99	106	107	0.43	46	0.31	33	0.25	27
46	Marble Gate Court	0.00	0	30	0.00	0	0.00	0	0.00	0
13B	Meadow Hill Run	0.61	137	225	0.30	67	0.17	38	0.14	32
19B, 20A, 23A	Memorial Chase	0.52	443	859	0.23	200	0.12	107	0.16	136
19C	Memorial Creek	0.71	187	263	0.23	61	0.20	53	0.28	73
19A	Memorial Creek Estates	0.86	201	234	0.29	69	0.20	47	0.36	85
18A, 18B, 24A, 24B, 25	Memorial Northwest	0.55	1238	2265	0.22	503	0.13	286	0.20	449
4B	Memorial Springs	0.71	664	931	0.38	358	0.16	150	0.17	156
32E	Middlecreek Village	0.54	58	108	0.31	34	0.08	9	0.14	15
6B	Miramar Lake	0.84	216	257	0.32	81	0.23	59	0.30	76
54B	Misty Valley Patio Homes	0.82	9	11	0.45	5	0.18	2	0.18	2
9A	Mossy Oaks	0.38	45	119	0.21	25	0.08	10	0.08	10
12A	Normandy Forest	0.87	459	530	0.32	172	0.22	114	0.33	173
5F	North Lake at Gleannloch Farms	0.88	7	8	0.88	7	0.00	0	0.00	0
7A,8B	Northampton	0.48	466	981	0.18	175	0.11	105	0.19	186
7A	Northampton Estates	0.44	50	113	0.17	19	0.07	8	0.20	23
7A	Northampton Forest	0.51	100	198	0.17	34	0.13	26	0.20	40
52A	Northcliffe	1.14	633	553	0.56	311	0.25	141	0.33	181
56B	Northcliffe Manor	0.93	896	959	0.44	423	0.22	210	0.27	263
15A	Northcrest Village	0.63	221	350	0.36	125	0.13	47	0.14	49
5D	Northern Point	0.79	412	519	0.44	230	0.15	79	0.20	103
4A	Northpoint East	0.74	356	484	0.42	201	0.13	65	0.19	90
59	Northwest Green	1.26	144	114	0.55	63	0.34	39	0.37	42
63C	Northwest Park Colony	0.66	31	47	0.34	16	0.15	7	0.17	8



**Klein ISD:  
Ratio of Students per Single Family Home by Subdivision**

Planning Unit	Subdivision	Total Ratio	# of Students	# of Homes	PK-5th		6th-8th		9th-12th	
					Ratio	Students	Ratio	Students	Ratio	Students
38A,38B	Northwood Farms	0.62	69	111	0.24	27	0.19	21	0.19	21
11B	Northwood Park	0.34	82	243	0.12	29	0.09	23	0.12	30
32B	Oaks of Devonshire	0.52	140	271	0.16	44	0.13	35	0.23	61
30C	Oaks of Spring Creek	0.31	5	16	0.13	2	0.06	1	0.13	2
39	Oaks of Terranova	0.56	40	72	0.17	12	0.11	8	0.28	20
26, 27A, 28A	Oakwood Glen	0.58	524	906	0.26	238	0.15	134	0.17	152
17	Oakwood Glen West	0.56	234	417	0.21	87	0.14	59	0.21	88
8A	Oakwood Village	1.15	69	60	0.73	44	0.22	13	0.20	12
48	Old Bridge Lake	0.09	9	103	0.07	7	0.02	2	0.00	0
15I	Orchards	0.83	66	80	0.24	19	0.21	17	0.38	30
1A	Paloma Creek	0.24	12	51	0.18	9	0.02	1	0.04	2
13B	Park at Meadow Hill Run	0.35	67	191	0.19	37	0.08	16	0.07	14
3A	Pine Trace Village	0.30	19	63	0.19	12	0.06	4	0.05	3
4A	Pinecrest Forest	0.66	429	649	0.39	255	0.15	95	0.12	79
6D	Pinewood Place MHP	1.25	284	228	0.75	170	0.28	63	0.22	51
7A	Preserve at Northampton	1.17	7	6	0.83	5	0.00	0	0.33	2
2	Princeton Place	0.60	128	214	0.30	64	0.15	32	0.15	32
15C,15I	Promenade	0.53	183	347	0.30	103	0.13	46	0.10	34
63A,63B	Recreation Farms	0.85	244	286	0.53	152	0.15	43	0.17	49
13A	Rhodes Landing	0.74	143	192	0.40	77	0.14	26	0.21	40
4D	Rodgers Addition	0.37	14	38	0.16	6	0.08	3	0.13	5
2	Saddlebrook Ranch	0.37	84	227	0.25	56	0.07	16	0.05	12
15F	Senterra Lakes	0.48	60	126	0.27	34	0.11	14	0.10	12
1A	Shadow Creek Estates	0.21	6	28	0.14	4	0.00	0	0.07	2
3C	Southern Legacy Homes (too new for	0.00	0	0	0.00	0	0.00	0	0.00	0
29B	Spring Creek Court	0.78	79	101	0.42	42	0.10	10	0.27	27
27B,28B	Spring Creek Forest	0.48	281	591	0.18	104	0.13	78	0.17	99
29A,30C	Spring Creek Oaks	0.54	501	923	0.19	177	0.13	124	0.22	200

Klein ISD:

Ratio of Students per Single Family Home by Subdivision



Planning Unit	Subdivision	Total Ratio	# of Students	# of Homes	PK-5th		6th-8th		9th-12th	
					Ratio	Students	Ratio	Students	Ratio	Students
30C	Spring Creek Oaks PH	0.06	3	47	0.04	2	0.02	1	0.00	0
32D	Spring Landing	0.76	138	182	0.34	61	0.19	35	0.23	42
9C	Spring Oaks MHP	0.06	8	140	0.04	6	0.01	1	0.01	1
9D	Spring Stuebner Estates	0.27	24	89	0.09	8	0.03	3	0.15	13
6C	Spring Terrace	0.85	459	543	0.39	212	0.17	94	0.28	153
6B	Spring Village Estates	0.20	2	10	0.10	1	0.10	1	0.00	0
15D	Springbrook	0.93	518	559	0.48	268	0.22	121	0.23	129
22	Sterling Gate Estates	0.53	20	38	0.21	8	0.18	7	0.13	5
7A	Sterling Ridge at Northampton	0.56	10	18	0.22	4	0.22	4	0.11	2
15F	Stone Forest	0.62	186	299	0.28	84	0.14	42	0.20	60
44A	Stonegate Court	0.08	2	24	0.04	1	0.00	0	0.04	1
4F	Stonepine	0.61	143	234	0.39	92	0.10	24	0.12	27
3A	Stratford at Willow Creek	1.10	11	10	0.20	2	0.40	4	0.50	5
3A	Suburban Ranches	0.46	24	52	0.10	5	0.15	8	0.21	11
5A	Sugarberry Place MHP	0.82	264	321	0.49	157	0.18	58	0.15	49
38A	Terranova	0.55	234	425	0.20	86	0.12	50	0.23	98
39	Terranova West	0.48	298	625	0.16	102	0.13	82	0.18	114
39	Terravista	0.46	50	109	0.27	29	0.10	11	0.09	10
5F	The Bluff	0.71	296	418	0.42	177	0.12	50	0.17	69
30A	The Chancel	0.63	38	60	0.35	21	0.15	9	0.13	8
5C	The Gardens	0.92	35	38	0.42	16	0.21	8	0.29	11
1A	The Gardens	0.38	3	8	0.25	2	0.13	1	0.00	0
1A	The Greens	0.08	4	49	0.02	1	0.02	1	0.04	2
1A	The Legends	0.78	7	9	0.33	3	0.22	2	0.22	2
5C	The Manor	1.16	95	82	0.51	42	0.38	31	0.27	22
41A	The Park at Cypresswood	0.18	7	39	0.08	3	0.03	1	0.08	3
31D	The Park at Cypresswood Glen	0.53	30	57	0.19	11	0.11	6	0.23	13
1A	The Preserve	0.46	109	237	0.21	50	0.10	23	0.15	36

Klein ISD:

Ratio of Students per Single Family Home by Subdivision



Planning Unit	Subdivision	Total Ratio	# of Students	# of Homes	PK-5th		6th-8th		9th-12th	
					Ratio	Students	Ratio	Students	Ratio	Students
12B	The Sanctaury	0.00	0	9	0.00	0	0.00	0	0.00	0
5H	The Retreat	0.14	20	146	0.08	11	0.04	6	0.02	3
5C	The Ridge	0.76	174	229	0.30	69	0.18	42	0.28	63
1A	The Villas	0.00	0	18	0.00	0	0.00	0	0.00	0
5C	The Woods	0.75	140	187	0.35	65	0.22	41	0.18	34
31C	Thicket at Cypresswood	0.64	163	253	0.18	46	0.13	34	0.33	83
4A	Three Lakes	0.52	165	320	0.27	85	0.11	36	0.14	44
4A	Three Lakes Estates	0.85	471	556	0.40	223	0.24	133	0.21	115
52B	Timber Meadow	1.22	273	224	0.55	123	0.29	66	0.38	84
1A	Timbercrest Village MHP	0.94	232	246	0.48	118	0.23	56	0.24	58
3C	Timberdale	0.60	33	55	0.33	18	0.13	7	0.15	8
1A	Timberwilde MHP	0.50	67	135	0.28	38	0.14	19	0.07	10
4C	Tomball RV Park MHP	0.43	12	28	0.14	4	0.18	5	0.11	3
1A	Toscana at Augusta Pines	0.58	107	184	0.26	48	0.15	27	0.17	32
56A	Traces	0.90	254	281	0.38	108	0.19	53	0.33	93
2	Traditions	0.45	49	110	0.16	18	0.14	15	0.15	16
6B	Trailwood Estates	0.34	13	38	0.11	4	0.08	3	0.16	6
15I	Trellises	0.59	37	63	0.22	14	0.17	11	0.19	12
30A	Twin Falls	0.40	40	100	0.13	13	0.09	9	0.18	18
39	Villa Nova	0.33	1	3	0.00	0	0.00	0	0.33	1
1D	Village	0.54	91	169	0.30	50	0.10	17	0.14	24
15E,15F	Villages of Bridgestone	0.58	70	120	0.28	34	0.13	15	0.18	21
15F	Villages of Senterra Lakes	0.62	95	153	0.30	46	0.14	22	0.18	27
34B	Villas at Candlelight Park	0.77	10	13	0.15	2	0.38	5	0.23	3
26	Villas of Oakwood Glen	0.47	25	53	0.21	11	0.11	6	0.15	8
21C	Vintage Di Vita Townhomes	0.00	0	41	0.00	0	0.00	0	0.00	0
21B	Vintage Lakes	0.38	15	40	0.08	3	0.05	2	0.25	10
20B	Vintage Royal	0.13	10	76	0.05	4	0.04	3	0.04	3

Klein ISD:



Ratio of Students per Single Family Home by Subdivision

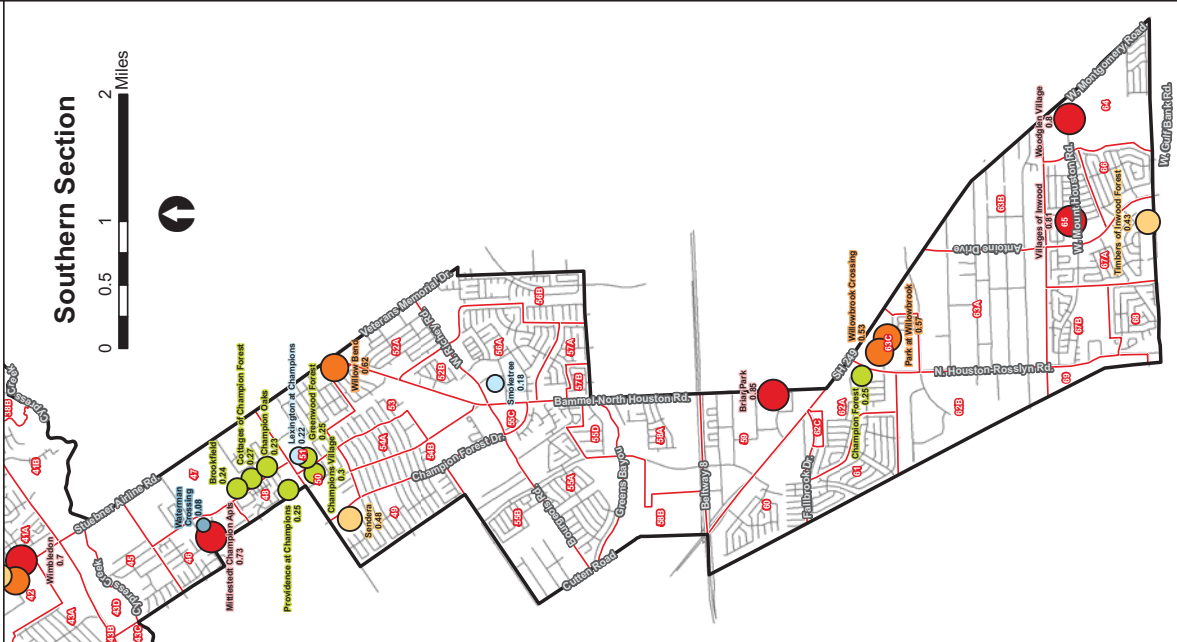
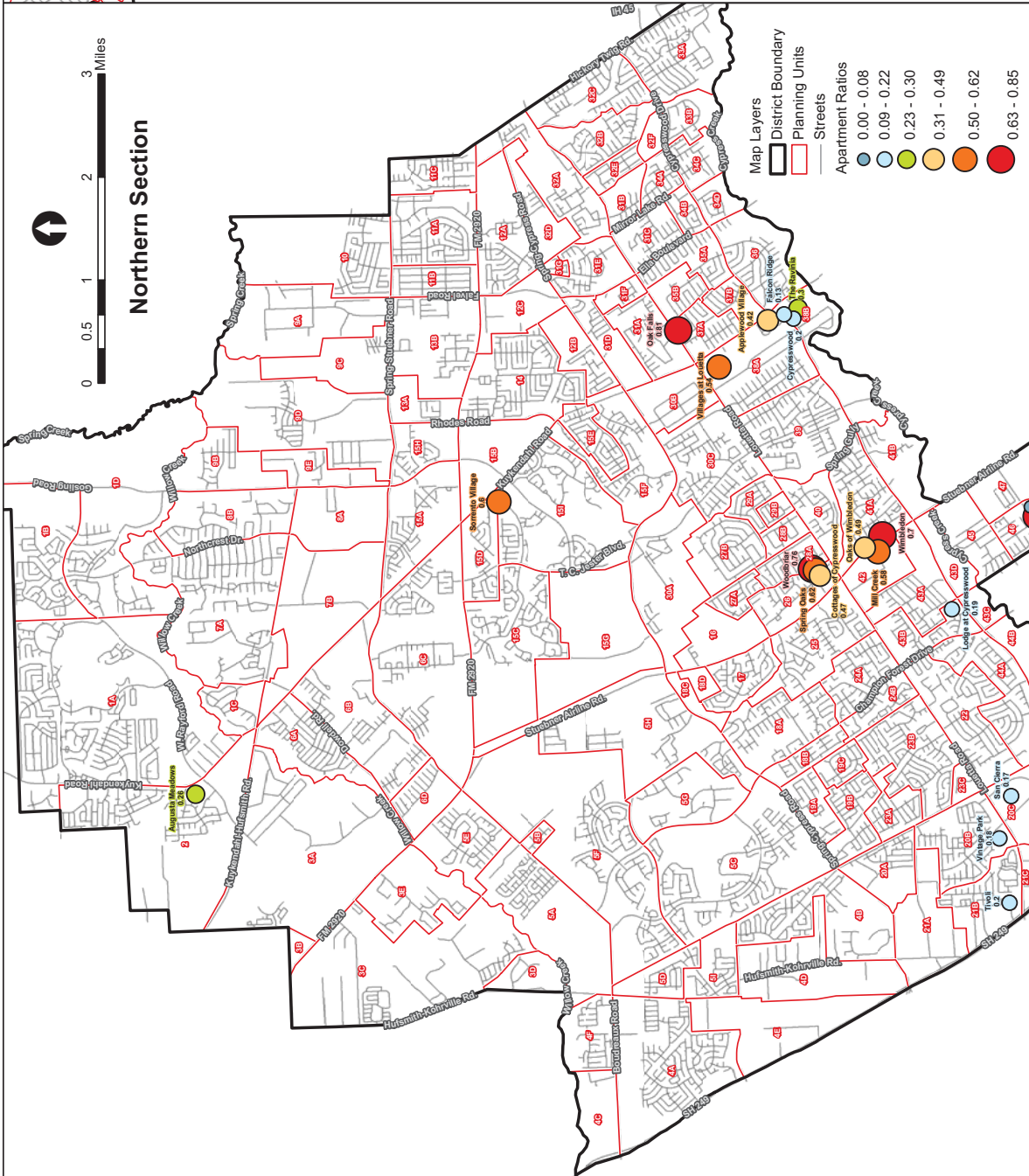
Planning Unit	Subdivision	Total Ratio	# of Students	# of Homes	PK-5th		6th-8th		9th-12th	
					Ratio	Students	Ratio	Students	Ratio	Students
3E	Waldenwood	0.33	16	49	0.20	10	0.04	2	0.08	4
31G	Weldon Forest	0.53	16	30	0.30	9	0.10	3	0.13	4
4D	Whisper Meadow MHP	0.98	44	45	0.51	23	0.13	6	0.33	15
3A	Willow Creek Manor	0.45	38	85	0.19	16	0.14	12	0.12	10
6B	Willow Dell	0.76	184	242	0.37	89	0.18	44	0.21	51
1A	Willow Estates	2.17	13	6	1.33	8	0.33	2	0.50	3
4F	Willow Falls	0.61	186	305	0.31	94	0.13	39	0.17	53
6A	Willow Forest	0.58	331	571	0.25	142	0.14	78	0.19	111
5A	Willow Glen	0.17	3	18	0.00	0	0.00	0	0.17	3
6A	Willow Oaks MHP	0.66	103	155	0.40	62	0.14	21	0.13	20
6C	Willow Trace	0.67	100	149	0.32	48	0.18	27	0.17	25
7A	Willowcreek Stables	0.44	22	50	0.04	2	0.12	6	0.28	14
17	Willowick Forest	0.60	76	126	0.17	21	0.15	19	0.29	36
61,62A	Willowood	1.04	1431	1379	0.51	709	0.23	323	0.29	399
41A	Wimbledon Center Court	0.12	5	43	0.07	3	0.02	1	0.02	1
41A	Wimbledon Champions	0.52	74	141	0.11	16	0.12	17	0.29	41
41B	Wimbledon Champions Estates	0.61	23	38	0.13	5	0.21	8	0.26	10
41B	Wimbledon Champions Park	0.57	55	96	0.15	14	0.17	16	0.26	25
2	Wimbledon Country	0.54	114	212	0.24	50	0.11	24	0.19	40
40,41A	Wimbledon Estates & Raquet Club	0.47	315	673	0.15	99	0.13	86	0.19	130
2	Wimbledon Falls	0.68	105	154	0.35	54	0.16	24	0.18	27
2	Wimbledon Falls Sec 6	0.00	0	0	0.00	0	0.00	0	0.00	0
41A	Wimbledon Forest	0.40	25	63	0.10	6	0.05	3	0.25	16
41A	Wimbledon Park	0.54	15	28	0.21	6	0.11	3	0.21	6
11A	Windsor Forest	0.61	70	115	0.27	31	0.14	16	0.20	23
21B	Woodbend Pines	0.57	39	68	0.22	15	0.18	12	0.18	12
28A	Woodbriar Place	0.33	42	127	0.22	28	0.03	4	0.08	10
1B,1D	Woods of Northampton	0.58	90	155	0.21	33	0.18	28	0.19	29



**Klein ISD:**  
**Ratio of Students per Single Family Home by Subdivision**

Planning Unit	Subdivision	Total Ratio	# of Students	# of Homes	PK-5th		6th-8th		9th-12th	
					Ratio	Students	Ratio	Students	Ratio	Students
30C	Woods of Spring Creek Oaks	0.39	13	33	0.09	3	0.15	5	0.15	5
46	Woods of Wimbledon	0.24	30	127	0.17	22	0.02	3	0.04	5
			<b>40,528</b>	<b>65,720</b>		<b>18,804</b>		<b>9,438</b>		<b>12,274</b>
		<b>Weighted Average Ratio: 0.62</b>			<b>0.29</b>		<b>0.14</b>		<b>0.19</b>	
						<b>46%</b>		<b>23%</b>		<b>30%</b>

# Ratios of Students per Occupied Unit By Multi-Family Complex





## Klein I.S.D.: Ratio of Students Per Household By Apartment

Planning Unit	Apartment Complex	Street Name	Total Students	Total Units	Occupied Units	% Occupied	Students per Occ. Unit	EE-5th		6th-8th		9th-12th	
								Students	Ratio	Students	Ratio	Students	Ratio
38A	Applewood Village	4500 Cypresswood	53	128	126	99%	<b>0.42</b>	25 47%	0.20	15 28%	0.12	13 25%	0.10
2	Augusta Meadows	24215 Kuykendahl Rd	60	264	235	89%	<b>0.26</b>	23 38%	0.10	14 23%	0.06	23 38%	0.10
59	Briar Park	10401 Old Bammel-N Houston	63	80	74	93%	<b>0.85</b>	27 43%	0.36	19 30%	0.26	17 27%	0.23
46	Bridgewater Landing Condos <i>*not included in total - Primarily Adult Living, but some children</i>	14911 Wunderlich					<i>* Not included in totals</i>						
47	Brookfield	14230 Wunderlich	55	250	230	92%	<b>0.24</b>	35 64%	0.15	4 7%	0.02	16 29%	0.07
62A	Cedar Pointe <i>*Not Included in Total</i>	7610 Fallbrook	0				<i>* Not included in totals</i>	0		0		0	
62A	Champion Forest	7330 Silent Wood Ln	28	112	112	100%	<b>0.25</b>	16 57%	0.14	5 18%	0.04	7 25%	0.06
47	Champion Oaks	14150 Wunderlich Dr	52	252	224	89%	<b>0.23</b>	29 56%	0.13	6 12%	0.03	17 33%	0.08
25	Champion Pines Condo <i>*not included in total - individually owned</i>	16910 Chapel Pines Dr					<i>* Not included in totals</i>						
50	Champions Village	12811 Greenwood Forest	80	278	267	96%	<b>0.30</b>	52 65%	0.19	12 15%	0.04	16 20%	0.06
65	Chesapeake Village Condo	8430 Antoine	32	72	72	100%	<b>0.44</b>	18 56%	0.25	8 25%	0.11	6 19%	0.08
47	Cottages of Champion Forest	14222 Wunderlich	73	300	270	90%	<b>0.27</b>	48 66%	0.18	12 16%	0.04	13 18%	0.05
26	The Cottages of Cypresswood	7203 Oakwood Glen	57	136	122	90%	<b>0.47</b>	31 54%	0.25	12 21%	0.10	14 25%	0.11
38B	Cypresswood	4607 Cypresswood	28	144	141	98%	<b>0.20</b>	14 50%	0.10	5 18%	0.04	9 32%	0.06
38B	Falcon Ridge	4603 Cypresswood	29	234	225	96%	<b>0.13</b>	15 52%	0.07	8 28%	0.04	6 21%	0.03
51	Greenwood Forest	12820 Greenwood Forest	75	316	297	94%	<b>0.25</b>	38 51%	0.13	14 19%	0.05	23 31%	0.08

## Klein I.S.D.:

### Ratio of Students Per Household By Apartment

Planning Unit	Apartment Complex	Street Name	Total Students	Total Units	Occupied Units	% Occupied	Students per Occ. Unit	EE-5th Students Ratio	6th-8th Students Ratio	9th-12th Students Ratio
67A	Inwood Meadows <i>*Not Included in Total.</i>	9003-9025 Antoine & 8923-8931	0	40			<i>*Not included in totals</i>	0 #DIV/0!	0 #DIV/0!	0 #DIV/0!
42	Lyons Court <i>*Not Included in Total-Individually owned</i>	16303 Lyons School Rd					<i>*Not included in totals</i>	0	0	0
51	Lexington at Champions	5007 FM 1960 Rd W	18	89	80	90%	<b>0.22</b>	7 39%	5 28%	6 33%
42	Mill Creek	16339 Stuebner-Airline	94	174	162	93%	<b>0.58</b>	52 55%	19 20%	23 24%
46	Mittlestedt Champions Apartments	14702-14826, 14707-148; Mittlestedt Champions Dr.	41	56	56	100%	<b>0.73</b>	21 51%	9 22%	11 27%
37A	Oak Falls	4545 Louetta	109	144	135	94%	<b>0.81</b>	49 45%	26 24%	34 31%
41A	Oaks of Wimbledon	16414 Stuebner-Airline	89	184	180	98%	<b>0.49</b>	39 44%	19 21%	31 35%
26	Oakwood Glen NA <i>*Not Included in Total. Not willing to provide data.</i>	7118 Oakwood Glen Blvd	0				<i>*Not included in totals</i>	0	0	0
63A	Park at Willowbrook	7100 Smiling Wood Lane	119	228	210	92%	<b>0.57</b>	72 61%	25 21%	22 18%
63C	Primrose at Heritage Park <i>*Senior Living. Not included in total.</i>	10655 N Old Bammel					<i>*Not included in totals</i>			
48	Providence at Champions	5100 FM 1960	68	288	271	94%	<b>0.25</b>	39 57%	18 26%	11 16%
68	Rosslyn Heights <i>*Not Included in Total.</i>	7015 Woodsman Trail					<i>*Not included in totals</i>			
20C	San Antigua <i>*not included in total- under construction-move in OCT 2012-277 units</i>	15300 Cullen Rd					<i>*Not included in totals</i>			
20C	San Sierra	15500 Cullen Rd	59	362	340	94%	<b>0.17</b>	27 46%	14 24%	18 31%
49	Sendera Champion Forest	12801 Champion Forest C	91	198	188	95%	<b>0.48</b>	47 52%	18 20%	26 29%
59	Seton Chase <i>*Not Included in Total.</i>	7703 Seton Lake Dr					<i>*Not included in totals</i>			

## Klein I.S.D.:

### Ratio of Students Per Household By Apartment

Planning Unit	Apartment Complex	Street Name	Total Students	Total Units	Occupied Units	% Occupied	Students per Occ. Unit	EE-5th Students Ratio	6th-8th Students Ratio	9th-12th Students Ratio
56A	Smoketree Townhomes	5110 Azalea Trace Dr	43	256	233	91%	<b>0.18</b>	21 49%	8 19%	14 33%
15I	Sorrento Village Townhomes	5600 Alvin A Klein	18	30	30	100%	<b>0.60</b>	8 44%	6 33%	4 22%
26	Spring Oaks	7103 Oakwood Glen	59	101	95	94%	<b>0.62</b>	33 56%	12 20%	14 24%
4D	Stoneleigh Cypress Pointe	10810 Spring Cypress Rd	41	228	228	100%	<b>0.18</b>	14 34%	10 24%	17 41%
30A	Stoneleigh on Spring Cypress <i>*Not Included in Total.</i>	7215 Spring Cypress Rd.					<i>*Not included in totals</i>			
30A	Stoneleigh on The Lake <i>*Not Included in Total.</i>	7303 Spring Cypress Rd.					<i>*Not included in totals</i>			
38A	Terranova at Cypresswood <i>*Not included in total - retirement community</i>	5600 Cypresswood Dr.					<i>*Not included in totals</i>			
43A	The Lodge at Cypresswood	8100 Cypresswood	64	366	333	91%	<b>0.19</b>	29 45%	14 22%	21 33%
38B	The Ravinia	2400 Spring Rain	67	232	220	95%	<b>0.30</b>	33 49%	13 19%	21 31%
67A	Timbers of Inwood Forest	5850 & 5880 W Gulf Bank	130	374	299	80%	<b>0.43</b>	81 62%	24 18%	25 19%
21B	Tivoli	10110 & 10111 Charterwc	30	157	151	96%	<b>0.20</b>	17 57%	8 27%	5 17%
46	Trophy Club Condos <i>*Individually owned properties</i>	14515 & 14555 Wunderlich					<i>*Not included in totals</i>			
5G	Village of Gleannloch Farms <i>*Not included in total - retirement community</i>	9505 Northpointe Blvd.					<i>*Not included in totals</i>			
38A	Villages at Louetta	5015 Louetta Rd.	152	300	282	94%	<b>0.54</b>	78 51%	26 17%	48 32%
65	Villages of Inwood	5710 W Mount Houston R 5710-5732 even	36	48	45	93%	<b>0.81</b>	13 36%	11 31%	12 33%

Klein I.S.D.:

Ratio of Students Per Household By Apartment

Planning Unit	Apartment Complex	Street Name	Total Students	Total Units	Occupied Units	% Occupied	Students per Occ. Unit	EE-5th Students Ratio	6th-8th Students Ratio	9th-12th Students Ratio
20B	Vintage Park	15727 Cutten	52	324	292	90%	0.18	24 46%	13 25%	15 29%
46	Waterman Crossing Condo <i>percentage is from Jan 2012</i>	14777 Wunderlich	16	300	198	66%	0.08	8 50%	5 31%	3 19%
51	Willow Bend	13949 Bammel-N Houston	175	333	283	85%	0.62	95 54%	37 21%	43 25%
63A	Willowbrook Crossing	7150 Smiling Wood	106	208	200	96%	0.53	74 70%	19 18%	13 12%
62C	Willowood Gardens Condos	7609 Fallbrook Dr 7513-7599 odd 7601-7695 odd	37	92	90	98%	0.41	15 41%	9 24%	13 35%
41A	Wimbledon	16222 Stuebner-Airline	112	161	161	100%	0.70	56 50%	26 23%	30 27%
41A	Wimbledon Pines Condos <i>*Individually owned properties</i>	16120 Stuebner-Airline				<i>* Not included in totals</i>				
26	Woodbriar	7133 Oakwood Glen	59	84	78	93%	0.76	33 56%	12 20%	14 24%
64	Woodglen Village	11111 W Montgomery	178	250	223	89%	0.80	100 56%	39 22%	39 22%
							<b>TOTAL RATIO: 2,748 8,173 7,457 91%</b>	<b>1,262 0.17</b>	<b>476 0.06</b>	<b>588 0.08</b>
							<b>WEIGHTED PERCENT BY GRADE GROUP:</b>	<b>45.9%</b>	<b>17.3%</b>	<b>21.4%</b>

Klein I.S.D.: Trends in Ratios of Students per Household



Planning Unit	Subdivision	July 2003 Ratio	April 2007 Ratio	October 2009 Ratio	Sept 2010 Ratio	Sept 2011 Ratio	August 2012 Ratio
3D	Albury Manor						0.17
3C	Albury Trails Estates			0.15	0.18	0.36	0.27
15I	Arbors						0.67
5C	Arbors						0.02
58	Ash Creek			1.27	1.16	1.08	0.85
5I	Ashford Grove					0.45	0.45
5D	Ashford Place		0.57	0.70	0.65	0.51	0.54
1D	Auburn Lakes - Auburn Lakes Estates		0.17	0.48	0.43	0.52	0.54
1D	Auburn Lakes - Auburn Lakes Pines			0.62	0.64	0.47	0.52
1D	Auburn Lakes - Auburn Lakes Reserve			0.76	0.73	0.48	0.51
1D	Auburn Lakes - Auburn Lakes Retreat				0.54	0.59	0.70
1B	Auburn Lakes - Auburn Lakes Retreat Sec 4						0.00
1D	Auburn Lakes - The Village		0.51	0.71	0.53	0.71	0.54
15I	Auburn Ridge						0.52
1A	Augusta Pines - The Courts at Auburn Lakes		0.13	0.06	0.10	0.10	
1A	Augusta Pines - Augusta Creek Estates			0.11		0.55	0.47
1A	Augusta Pines - Augusta Creek Gardens			0.00		0.00	
1A	Augusta Pines - Augusta Creek Pointe			0.50	0.35	0.59	0.52
1A	Augusta Pines - Augusta Pines			1.10	0.80	0.59	0.47
1A	Augusta Pines - Paloma Creek			0.50	0.27	0.29	0.24
1A	Augusta Pines - Shadow Creek Estates			1.08	0.13	0.42	0.21
1A	Augusta Pines - Shadow Creek Estates - The Villas				0.17	0.00	
1A	Augusta Pines - The Estates				1.00		
1A	Augusta Pines - The Forest		0.20				
1A	Augusta Pines - The Gardens				0.00		0.00
1A	Augusta Pines - The Greens		0.08		0.08		0.65
1A	Augusta Pines - The Legends at Augusta Pines		1.00	1.00	0.75	0.63	0.78
1A	Augusta Pines - The Preserve - Oak Hill Estates		0.58	0.40	0.80		
1A	Augusta Pines - The Preserve - Oak Trace		0.61	0.58	0.54		
1A	Augusta Pines - The Preserve - Oakmont Village		0.13	0.23	0.22		
1A	Augusta Pines - The Villas			0.00	0.00		
1A	Augusta Pines - Toscana		0.20			0.56	0.58
5H	Azalea Estates						0.42
67B	Azalea Village						0.84
31F	Bainbridge Estates			0.92	0.61	0.63	0.75
55D	Bammel Oaks Estates						0.58
6C	Bella Sera		0.46	0.66	0.65	0.69	0.69
32C	Bending Bough	0.74					0.39
47	Big Cypress Hill Estates				0.44	0.19	0.19
60	Blue Creek			1.14	1.15	1.17	0.95
14	Bridgestone	0.69					0.61
5B	Boudreaux Gardens MHP		0.73	0.47	0.61	0.55	0.71
19A	Brentwood Lakes			0.43	0.33	0.26	0.39
13B	Bridgestone Lakes			0.95	0.93	0.00	0.82
14	Bridgestone Ranch						0.64
15E	Bridgestone West						0.54
34A,31B,34C	Candlelights Hills						0.45
34A,34C	Candlelight Park Estates						0.22
53,54A	Capistrano Villas						1.44
22	Champions Cove	0.69					
21A	Cedar Creek Forest MHP						0.13
5H	Cedar Oaks						0.92
22,44A	Champion Forest						0.44
4B	Champions Lakes Estates		0.22	0.47	0.58	0.44	0.45
23	Champion Pines			0.42	0.65	0.65	0.50
55A	Champion Point Village						0.95
23B	Champion Springs			0.71	0.54	0.59	0.60
23B	Champion Springs Village						0.45
4B	Champion Woods						0.50
25	Champion Woods Estates			0.43	0.40	0.40	0.52
55B	Champion Woods Estates - The Reserve			0.65	0.47	0.58	
25	Champion Woods Estates - The Retreat			0.00	0.00		
55B	Champions Crossing			0.35	0.49	0.00	0.47
54B	Champions Point Grove						1.03
47	Champions Terrace						0.24
23C	Champions Trail			0.35	0.33	0.30	0.27
55A	Champions Valley TH						0.97
20B	Charterwood			0.78	0.65	0.64	0.68

"Light Green" subdivisions indicate continued increases in the no. of students per home. "Yellow" subdivisions show areas where ratios declined this year.  
(Population and Survey Analysts)

Klein I.S.D.: Trends in Ratios of Students per Household



Planning Unit	Subdivision	July 2003 Ratio	April 2007 Ratio	October 2009 Ratio	Sept 2010 Ratio	Sept 2011 Ratio	August 2012 Ratio
3D	Albury Manor						0.17
3C	Albury Trails Estates			0.15	0.18	0.36	0.27
65	Cherie Cove			0.85	1.06	1.00	1.14
20B	Colony Creek Village	0.87		0.63	0.65	0.71	0.56
57B	Copper Falls			1.19	1.26	1.27	0.95
5A	Cottage Gardens	0.49	0.33	0.62	0.76	0.64	0.66
3C	Country Club Greens		0.43	0.74	0.81	0.82	0.84
31A	Country Lake Estates			0.68	0.06	0.00	0.76
1D	Courts						0.09
1A	Coventry		0.56				0.55
12A	Covington Bridge	0.49		0.78	0.57	0.83	0.81
1C	Creek Wood Acres		0.50				0.32
6B	Creekside Place		0.53	0.89	0.96	0.98	0.78
13B	Cricket Hill Estates MHP		0.27	0.21	0.27	0.27	0.48
55A	Cutten Green	0.66					0.38
45	Cypress Creek Manor						0.32
33A	Cypress Forest Estates						0.40
33A	Cypress Forest Lakes			0.36	0.65	0.53	0.65
39	Cypress Trace		0.47	0.56	0.71	0.62	0.79
38A	Cypress Villas						0.77
35B, 37A	Cypressdale						0.52
35A	Cypresswood	0.83		0.77	0.69	0.76	0.54
36	Cypresswood	0.49			0.69	0.76	0.54
43A	Cypresswood Forest			0.62	0.69	0.73	0.67
31E	Cypresswood Glen						0.58
31D	Cypresswood Glen - The Park at Cypresswood Glen			0.59	0.50	0.00	0.53
31E	Cypresswood Glen Estates						0.59
36	Cypresswood Place						0.09
32B	Devonshire Woods						0.55
11A	Dove Meadows	0.66		0.53	0.41	0.40	0.84
52A	Duplexes						0.96
47	Edinburgh Estates	0.45					0.25
33A	Enchanted Oaks	0.72					0.46
32E	Estates at Creeks End			0.64	0.67	0.69	0.73
3C	Estates at Willow Creek			0.43	0.42		0.28
41B	Estates at Wimbeldon Champions			0.68	0.21	0.00	
22	Estates at Windbrush						0.54
43B	Falls at Champions Forest			0.27		0.49	0.46
30B	Farmette Meadows						0.71
26	Fawn River Garden Homes						0.53
9B	Five Oaks MHP	0.87	0.78	1.20	1.14	1.20	0.99
10	Forest North	0.95					0.58
10	Forest Ridge				0.51	0.60	0.54
51,53	Fountainhead						0.64
9D	Fox Hollow						0.50
9D	Fox Hollow South						0.66
15H	Future Auburn Lakes						0.00
64	Garden City Park	0.47		0.39	0.47	0.41	0.40
18A	Gleann Haven Estates		0.97	0.69	0.77	0.76	0.77
5C	Gleann Meadows		0.00				
5C	Gleannloch Farms (Northern)	0.41					
5C	Gleannloch Farms (Southern)	0.63					
5C	Gleannloch Farms - Arbors			0.02	0.00	2.76	0.02
5F	Gleannloch Farms - Dove Manor		0.45	0.61	0.69	0.70	0.84
5F	Gleannloch Farms - Gleannfield		0.44	0.53	0.49	0.49	0.59
5F	Gleannloch Farms - Gleannmanor		0.30	0.64	0.77	0.74	0.54
5F	Gleannloch Farms - Havenwood			0.09	0.07	0.13	0.27
5C	Gleannloch Farms - Lake Estates			1.03	0.67	0.92	
5C	Gleannloch Farms - Manor Estates			1.12	1.12	1.18	
5C	Gleannloch Farms - The Bluff		0.62				
5C	Gleannloch Farms - The Estates		0.92				
5C	Gleannloch Farms - The Hillcrest		0.97				1.10
5C	Gleannloch Farms - The Paddock Estates		1.04				
5H	Gleannloch Farms - The Retreat at Gleannloch Farms			0.11	0.06	0.10	
19B	Glenloch	0.77					0.45
1D	Goodwin Trailer Park MHP						0.09
15H	Gosling Pines		0.65	0.61		0.67	0.58
11A	Greengate Acres						0.42

"Light Green" subdivisions indicate continued increases in the no. of students per home. "Yellow" subdivisions show areas where ratios declined this year.  
(Population and Survey Analysts)

Klein I.S.D.: Trends in Ratios of Students per Household



Planning Unit	Subdivision	July 2003 Ratio	April 2007 Ratio	October 2009 Ratio	Sept 2010 Ratio	Sept 2011 Ratio	August 2012 Ratio
	3D						0.17
	3C			0.15	0.18	0.36	0.27
49, 53, 54A, 54B	Greenwood Forest	0.64		0.33	0.37	0.36	0.36
	49						0.00
	54B						0.00
	55C				1.57	1.18	1.02
	7A		0.69				0.48
	11C						0.58
	1A						0.39
	5C						0.05
	4D						0.47
	5H						0.76
46 & 48	Huntwick Forest			0.20	0.14	0.11	0.03
	48						0.00
	9B		0.67				0.75
	5E		0.56	0.74	0.45	0.71	0.64
	8B						0.90
	67A						0.37
65, 66, 67A	Inwood North	0.63		0.72	0.65	0.68	0.64
	67B						0.82
	68	0.78					0.83
	56A						0.00
2	Klein Meadows		0.12	0.82	0.75	0.69	0.76
	57A			0.80	0.87	0.84	0.76
	56A						0.90
	43A	0.64		0.34	0.41	0.69	0.47
	40			1.06	0.88	1.19	0.50
	6C			0.63	0.70	0.99	
	5H			0.76	0.87		0.85
	33B			0.52		0.48	0.44
	22					0.49	0.29
	15I						0.33
	1A	1.04	0.82	0.85	0.69	0.80	0.63
	32C			0.41	0.34	0.20	0.57
	32A			0.77	0.69	0.67	0.57
	32A			0.47	0.55	0.58	0.46
	16		0.33	0.44	0.57	0.00	0.52
	20B			0.73	0.77	0.77	0.60
	46			0.00	0.00	0.00	0.00
	13B		0.49	0.66	0.70	0.88	0.61
	19B	0.74					0.52
	19C		1.06	0.83	0.67	0.64	0.71
	19A						0.86
18A, 18B, 24A, 24B, 25	Memorial Northwest	0.76		0.49	0.66	0.69	0.55
	4B & 25		0.63	0.69	0.68	0.66	0.71
	32E			0.38	0.28	0.00	0.54
	6B		0.76	0.94	0.97	0.91	0.54
	54B						0.82
	9A						0.38
	12A			0.84	0.80	0.81	0.87
	5F						0.88
	7A	0.71	0.41				0.48
	7A						0.44
	7A		0.83				0.51
	7A		0.69				
	7A		0.74				
	7A		1.00				0.56
	1D		0.42	0.31	0.46	0.50	0.34
	1D			0.00	0.09	0.09	
	52A						1.14
	56B	1.10		0.98	1.01	0.96	0.93
	15A		0.30	0.47	0.54	0.58	0.63
	5D		0.57	0.74	0.77	0.77	0.79
	4A						0.74
	59						1.26
	63C			0.59	0.63	0.63	0.66
38A, 38B	Northwood Farms						0.62
	11B						0.34

"Light Green" subdivisions indicate continued increases in the no. of students per home. "Yellow" subdivisions show areas where ratios declined this year.  
(Population and Survey Analysts)

Klein I.S.D.: Trends in Ratios of Students per Household



Planning Unit	Subdivision	July 2003 Ratio	April 2007 Ratio	October 2009 Ratio	Sept 2010 Ratio	Sept 2011 Ratio	August 2012 Ratio
3D	Albury Manor						0.17
3C	Albury Trails Estates			0.15	0.18	0.36	0.27
32B	Oaks of Devonshire						0.52
30A	Oaks of Spring Creek	0.89					0.31
1A	Oakmont Village - The Preserve					0.00	0.46
1A	Oak Trace - The Preserve					0.00	
1A	Oak Hill Estates - The Preserve					0.00	
39	Oaks of Terranova						0.56
26, 27A, 28A	Oakwood Glen	0.75		0.91	0.99	0.97	0.58
17	Oakwood Glen West			0.67	0.62	0.62	0.56
8A	Oakwood Village		1.11				1.15
48	Old Bridge Lake						0.09
15I	Orchards						0.83
13B	Park at Meadow Hill Run						0.35
3A	Pine Trace Village			0.30	0.03	0.42	0.30
4A	Pincrest Forest			0.44	0.51	0.54	0.66
6D	Pinewood Place MHP		0.72	0.97	1.03	0.92	1.25
7A	Preserve at Northampton						1.17
2	Princeton Place		0.69	0.58	0.62	0.63	0.60
15C, 15I	Promenade						0.53
63A, 63B	Recreation Farms						0.85
13A	Rhodes Landing			0.84	0.80	0.89	0.74
4D	Rodgers Addition						0.37
2	Saddlebrook Ranch		0.10	0.69	0.51	0.39	0.37
15F	Senterra Lakes			0.62	0.63	0.61	0.48
3C	Southern Legacy Homes						
29	Spring Creek Court		0.83	0.81	0.66	0.71	0.78
27B, 28B	Spring Creek Forest						0.48
29A, 30C	Spring Creek Oaks						0.54
30C	Spring Creek Oaks PH						0.06
32A	Spring Landing	0.41		0.74	0.84	0.89	0.76
9C	Spring Oaks MHP			0.03	0.05	0.35	0.06
9B	Spring Stuebner Estates		0.33				0.27
6C	Spring Terrace		0.81	0.60	0.94	0.83	0.85
6B	Spring Village Estates		0.33	0.38	0.44	0.11	0.20
15D	Springbrook			0.77	0.76	0.67	0.93
22	Sterling Gate Estates						0.53
7A	Sterling Ridge at Northampton			1.07	1.00	1.00	0.56
15F	Stone Forest						0.62
44A	Stonegate Court						0.08
4C	Stonepine		0.48	0.70	0.46	0.58	0.61
3A	Stratford at Willow Creek		0.40				1.10
3A	Suburban Ranches		0.47				0.46
5A	Sugarberry Place MHP		0.29	0.71	0.82	0.79	0.82
38A	Terranova						0.55
39A	Terranova West	0.87		0.55	0.58	0.65	0.48
39	Terravista			0.70	0.73	0.00	0.46
39	Terravista - Terravista Estates			0.31	0.23		
30A	The Chancel				0.00	0.76	0.63
5C	The Gardens						0.92
1A	The Gardens						0.38
1A	The Greens					0.08	0.08
5C	The Manor						1.16
5C	The Ridge						0.76
12B	The Sanctaury						0.00
1A	The Villas					0.00	0.00
41A	The Park at Cypresswood						0.18
13B	The Park at Meadowhill Run			0.37	0.44		
5C	The Woods						0.75
31C	Thicket at Cypresswood			0.70	0.62	0.62	0.64
4A	Three Lakes		0.56	0.50	0.53	0.53	0.52
52B	Timber Meadow			1.38	1.46	1.28	1.22
1A	Timbercrest Village MHP	0.72	1.14	0.88	0.89	0.83	0.94
3C	Timberdale						0.60
1A	Timberwilde MHP	0.47	0.38	0.35	0.60	0.65	0.50
4C	Tomball RV Park MHP						0.43
2	Traditions			0.65			0.45
6B	Trailwood Estates			0.58			0.34

"Light Green" subdivisions indicate continued increases in the no. of students per home. "Yellow" subdivisions show areas where ratios declined this year. (Population and Survey Analysts)



